

PLEASE CLICK ON THE PAGE NUMBER TO MOVE TO THE RELEVANT PAGE.

### KEY HIGHLIGHTS

*Update*

**Bangkok Dusit Medical Services (BDMS TB/BUY/Bt26.75/Target: Bt32.00)** Page 2  
Expect a seasonal drop in 2Q24.

### KEY INDICES

Symbol	Close	Chg	%Chg
SET	1,309.46	(9.69)	(0.73)
SET50	811.50	(6.08)	(0.74)
Value (Btm) - SET	31,583		
<b>Top 5 Sector</b>			
BANK	352.15	(4.51)	(1.26)
PETRO	594.54	(12.98)	(2.14)
PROP	197.89	(1.97)	(0.99)
ENERG	18,381.33	(211.02)	(1.13)
ICT	157.05	0.15	0.10

Source: Bloomberg

### TOP VOLUME

Symbol	Close (Baht)	+/-(% Chg)	5-day ADT (BTm)
EA	15.00	(12.79)	1,757.4
SCB	104.00	(1.89)	1,083.5
BH	251.00	2.03	760.9
TRUE	8.90	1.71	828.9
CPALL	55.75	(0.45)	1,418.7

### TOP GAINERS

Symbol	Close (Baht)	+/-(% Chg)	5-day ADT (BTm)
SDC	0.03	50.00	0.8
SOLAR	0.67	31.37	2.7
HEALTH	1.43	26.55	10.0
AS	4.86	19.12	188.8
OHTL	434.00	18.90	1.1

### TOP LOSERS

Symbol	Close (Baht)	+/-(% Chg)	5-day ADT (BTm)
KKC	0.09	(52.63)	0.1
JCKH	0.02	(33.33)	0.0
ARIN	0.99	(29.79)	0.5
CHO	0.06	(14.29)	2.3
BYD	1.61	(13.44)	132.9

\*ADT: Average daily turnover

### KEY STATISTICS

Commodity	Current Price	%Chg		
		1m	3M	YTD
Brent crude*	86.6	3.2	1.5	13.7
Dubai crude*	84.1	2.2	(0.3)	10.0
Baltic Dry Index	2,031.0	13.8	11.5	(3.0)
Gold Spot***	2,320.9	(1.7)	4.1	12.5

\*(US\$/bb), \*\*\* (US\$/toz)

### FOREIGN PORTFOLIO INVESTMENT IN EQUITIES (THAILAND)

Day (Mil US\$)	MTD Net (Mil US\$)	YTD Net (Mil US\$)	YTD Net YoY%
(64.8)	(878.9)	(3,159.6)	(4,874.9)

Source: Bloomberg

Foreign Exchange Rate - THB/US\$ (onshore) = 36.89

Interest Rate (%) - TH 1-day RP = 1.50

Thai Lending Rate (%)\* - MLR = 7.10

COMPANY UPDATE

**Bangkok Dusit Medical Services (BDMS TB)**

Expect A Seasonal Drop In 2Q24

BDMS has been gradually improving in profitability ever since the COVID-19 outbreak eased. We should see steady growth going forward as international patients have returned and the daily volume has recovered. There are also factors supporting the growth in patient volume and treatment prices. However, we foresee a qoq drop in 2Q24 due to seasonality. Maintain BUY. Target price: Bt32.00.

WHAT'S NEW

- **Ever since the COVID-19 outbreak subsided, profitability has been constantly improving.** During the peak of the COVID-19 outbreak, the overwhelming number of cases filled hospital beds across the country. However, these patients were not profitable for hospitals as it stretched the capabilities of available personnel and immobilized other Outpatient Department (OPD) units. The number of international patients (high contribution to margin) also dropped due to lockdowns across the world. Now that the outbreak has passed, the hospitals are back to their normal operations and international patients are back after the lifting of travel restrictions. The margins have become more stable and are gradually improving.

REVENUE BY SOURCE

Revenue Breakdown	1Q22	2Q22	3Q22	4Q22	1Q23	2Q23	3Q23	4Q23	1Q24
<i>Nationality</i>									
Thai	78%	76%	76%	73%	71%	74%	74%	72%	70%
International	22%	24%	24%	27%	29%	26%	26%	28%	30%
<i>Location</i>									
Bangkok	57%	58%	56%	56%	56%	56%	56%	56%	54%
Upcountry	43%	42%	44%	44%	44%	44%	44%	44%	46%
<i>Hospital Services</i>									
OPD	45%	48%	47%	49%	48%	48%	48%	48%	49%
IPD	55%	52%	53%	51%	52%	52%	52%	52%	51%

Source: BDMS, UOB Kay Hian

- **Our forecast is slightly above the company's guidance.** Bangkok Dusit Medical Services (BDMS) guided for 2024 revenue growth of 10% while we forecast a 10.2% growth. The guidance on total capex (annual + expansion) for 2024 is 8-10% of total revenue while we forecast a total capex of 9.2% of total revenue. The guided EBITDA margin is 24-25% but our estimate is 25.2%, slightly above the guided range.

KEY FINANCIALS

Year to 31 Dec (Btm)	2022	2023	2024F	2025F	2026F
Net turnover	91,934	100,853	111,107	117,199	123,353
EBITDA	22,941	24,784	28,049	29,618	31,208
Operating profit	16,992	18,936	21,856	23,075	24,308
Net profit (rep./act.)	12,606	14,375	17,052	18,084	19,133
Net profit (adj.)	12,606	14,375	17,052	18,084	19,133
EPS (Bt)	0.8	0.9	1.1	1.1	1.2
PE (x)	33.7	29.6	24.9	23.5	22.2
P/B (x)	4.7	4.5	4.3	4.1	3.9
EV/EBITDA (x)	19.0	17.6	15.6	14.7	14.0
Dividend yield (%)	2.2	2.6	3.1	3.3	3.5
Net margin (%)	13.7	14.3	15.3	15.4	15.5
Net debt/(cash) to equity (%)	9.6	9.1	7.4	6.8	6.0
Interest cover (x)	36.3	45.3	102.3	150.2	276.5
ROE (%)	14.5	15.5	17.5	17.8	18.1
Consensus net profit	-	-	15,732	17,178	19,022
UOBKH/Consensus (x)	-	-	1.08	1.05	1.01

Source: Bangkok Dusit Medical Services, Bloomberg, UOB Kay Hian

BUY

(Maintained)

Share Price	Bt26.75
Target Price	Bt32.00
Upside	+19.6%

COMPANY DESCRIPTION

A group of leading private hospitals with a nationwide network offering world-class medical treatment to both local and international patients with new greenfield projects, M&A and digitalization of healthcare services as key long-term growth drivers.

STOCK DATA

GICS sector	Health Care
Bloomberg ticker:	BDMS TB
Shares issued (m):	15,892.0
Market cap (Btm):	425,111.1
Market cap (US\$m):	11,600.5
3-mth avg daily t'over (US\$m):	28.3

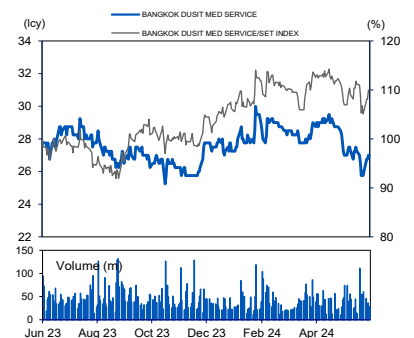
Price Performance (%)

52-week high/low	Bt30.00/Bt25.25				
<b>1mth</b>	<b>3mth</b>	<b>6mth</b>	<b>1yr</b>	<b>YTD</b>	
(7.0)	(6.1)	0.0	(5.3)	(3.6)	

Major Shareholders

	%
Prasartong-osoth family	18.0
Thai NVDR	13.7
Bangkok Airways	5.2
FY24 NAV/Share (Bt)	6.25
FY24 Net Debt/Share (Bt)	0.46

PRICE CHART



Source: Bloomberg

ANALYST(S)

**Benjaphol Suthwanish**  
 +662 659 8301  
 Benjaphol@uobkayhian.co.th

ASSISTANT ANALYST(S)

**Nonpawit Vathanadachakul**

- **Expect a seasonal drop in 2Q24.** In 2Q24, we expect to see a margin compression due to seasonality of the healthcare business. The pressure should come from the cost side, which is mainly dominated by personnel cost. There are many public holidays in 2Q, so BDMS' staff cost is expected to rise sharply qoq due to the increase in overtime pay to continue operating the hospitals. However, we should still see yoy growth in 2Q24 top-line.

### CORE OPERATIONAL STATISTICS

Core Operational Stats	1Q23	4Q23	1Q24	yoy (%)	qoq (%)
OPD visits per day	30,785	34,774	34,559	12%	-1%
Available beds	6,458	6,687	6,686	4%	0%
Average daily census	4,103	4,604	4,473	9%	-3%

Source: BDMS, UOB Kay Hian

### STOCK IMPACT

- **Surge in insurance will boost patient volume.** After the COVID-19 outbreak, people became more aware of the importance of and need for insurance. We are seeing a trend of increasing payors in insurance with the self-pay portion decreasing. This is a good thing for hospitals as self-paying payors are more sensitive to economics and can deny unnecessary treatments while the admission rate for insurance payors is higher as the treatments are covered by insurance.
- **Treatment price will be driven by Centers of Excellence.** Centers of Excellence (COE) are hospitals where BDMS provide treatments for complex and medically intense conditions such as trauma, heart diseases, orthopedics, neurological diseases, and cancer. For the conditions mentioned, the price of treatments is high, leading to high profitability for hospitals. BDMS has 13 COEs across Thailand and one COE in Cambodia. They contributed up to 62% of BDMS's EBITDA in 1Q24. The advantage of COEs is that they are located in top tourist destinations like Pattaya and Phuket where competition is not as fierce as in Bangkok. They often come as part of a medical tourism package to attract fly-in patients as well as expats who often come for more complex treatments, resulting in more profitability for BDMS.

### VALUATION/RECOMMENDATION

- **Maintain BUY with a target price of Bt32.00.** Our valuation is based on EV/EBITDA multiple of 18.0x. Despite BDMS being likely to have a seasonal drop qoq in 2Q24, we still like BDMS due to: a) its clear plan of driving growth via patient volume and pricing, b) its diversified base of patients, and c) its advantage in having COEs located in top tourist destinations.

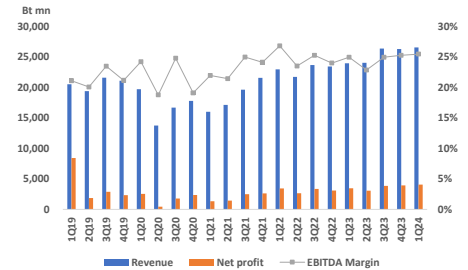
### SHARE PRICE CATALYST

- Insurance to boost patient volume.
- COEs to drive price of treatments.

### ENVIRONMENTAL, SOCIAL, GOVERNANCE (ESG)

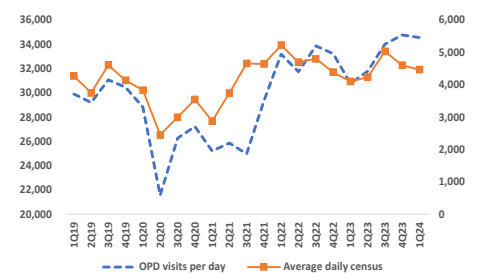
<b>CG Report: 5</b>
<b>SET ESG Rating: AA</b>
<ul style="list-style-type: none"> <li>• <b>Environmental</b> <ul style="list-style-type: none"> <li>- <b>Energy efficiency and waste management</b> by using energy-saving equipment and renewable energy sources.</li> </ul> </li> <li>• <b>Social</b> <ul style="list-style-type: none"> <li>- <b>High-quality and accessible healthcare services.</b></li> <li>- <b>Strong community engagement</b> with active participation in health education and disaster relief efforts.</li> </ul> </li> <li>• <b>Governance</b> <ul style="list-style-type: none"> <li>- <b>Strict standards</b> to ensure transparency and ethical business practices.</li> <li>- <b>Promote culture of compliance and ethics</b> through established codes of conduct and anti-corruption policies.</li> </ul> </li> </ul>

### BDMS QUARTERLY PERFORMANCE



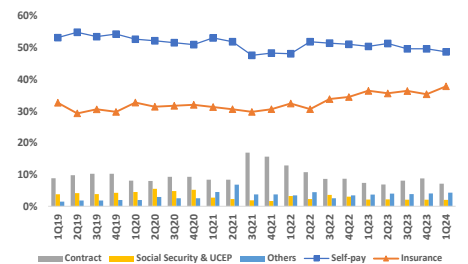
Source: BDMS, UOB Kay Hian

### BDMS' OPD AND IPD PATIENT VOLUME



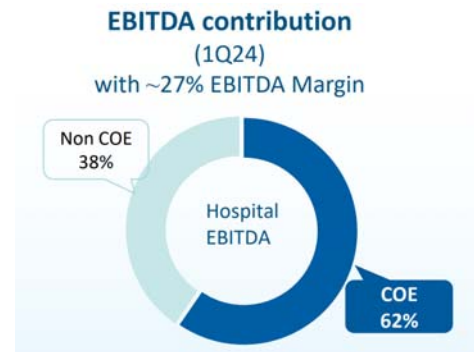
Source: BDMS, UOB Kay Hian

### REVENUE BREAKDOWN BY PAYOR



Source: BDMS, UOB Kay Hian

### CENTER OF EXCELLENCE CONTRIBUTION



Source: BDMS, UOB Kay Hian

### PROFIT & LOSS

Year to 31 Dec (Btm)	2023	2024F	2025F	2026F
<b>Net turnover</b>	<b>100,853</b>	<b>111,107</b>	<b>117,199</b>	<b>123,353</b>
EBITDA	24,784	28,049	29,618	31,208
Deprec. & amort.	5,848	6,193	6,543	6,901
EBIT	18,936	21,856	23,075	24,308
Total other non-operating income	173	177	180	184
Associate contributions	89	98	108	119
Net interest income/(expense)	(547)	(274)	(197)	(113)
<b>Pre-tax profit</b>	<b>18,652</b>	<b>21,857</b>	<b>23,166</b>	<b>24,498</b>
Tax	(3,755)	(4,262)	(4,517)	(4,777)
Minorities	(522)	(543)	(565)	(587)
<b>Net profit</b>	<b>14,375</b>	<b>17,052</b>	<b>18,084</b>	<b>19,133</b>
Net profit (adj.)	14,375	17,052	18,084	19,133

### CASH FLOW

Year to 31 Dec (Btm)	2023	2024F	2025F	2026F
<b>Operating</b>	<b>19,378</b>	<b>24,734</b>	<b>25,330</b>	<b>26,761</b>
Pre-tax profit	18,652	21,857	23,166	24,498
Tax	(3,755)	(4,262)	(4,517)	(4,777)
Deprec. & amort.	5,848	6,193	6,543	6,901
Associates	(89)	(98)	(108)	(119)
Working capital changes	(557)	410	(366)	(369)
Non-cash items	730	535	503	508
Other operating cashflows	(1,451)	98	108	119
<b>Investing</b>	<b>(11,214)</b>	<b>(10,404)</b>	<b>(11,098)</b>	<b>(11,473)</b>
Capex (growth)	(11,838)	(10,238)	(11,505)	(11,873)
Investments	(280)	(141)	(153)	(165)
Others	904	(26)	560	566
<b>Financing</b>	<b>(13,657)</b>	<b>(16,461)</b>	<b>(16,827)</b>	<b>(17,593)</b>
Dividend payments	(9,535)	(13,047)	(13,916)	(14,681)
Issue of shares	0	0	0	0
Proceeds from borrowings	0	0	0	0
Loan repayment	(5,460)	(3,414)	(2,911)	(2,912)
Others/interest paid	1,338	0	0	0
<b>Net cash inflow (outflow)</b>	<b>(5,493)</b>	<b>(2,132)</b>	<b>(2,595)</b>	<b>(2,305)</b>
<b>Beginning cash &amp; cash equivalent</b>	<b>14,988</b>	<b>9,495</b>	<b>7,363</b>	<b>4,768</b>
<b>Ending cash &amp; cash equivalent</b>	<b>9,495</b>	<b>7,363</b>	<b>4,768</b>	<b>2,463</b>

### BALANCE SHEET

Year to 31 Dec (Btm)	2023	2024F	2025F	2026F
<b>Fixed assets</b>	<b>116,679</b>	<b>120,723</b>	<b>125,685</b>	<b>130,658</b>
Other LT assets	3,372	3,676	3,878	4,092
Cash/ST investment	9,495	7,363	4,768	2,463
Other current assets	14,051	13,377	14,111	14,852
<b>Total assets</b>	<b>143,596</b>	<b>145,139</b>	<b>148,442</b>	<b>152,065</b>
ST debt	2,817	3,330	4,343	1,357
Other current liabilities	15,616	15,888	16,760	17,639
LT debt	15,317	11,390	7,465	7,540
Other LT liabilities	10,973	11,111	11,720	12,335
Shareholders' equity	95,242	99,247	103,416	107,868
Minority interest	3,630	4,173	4,738	5,325
<b>Total liabilities &amp; equity</b>	<b>143,596</b>	<b>145,139</b>	<b>148,442</b>	<b>152,065</b>

### KEY METRICS

Year to 31 Dec (%)	2023	2024F	2025F	2026F
<b>Profitability</b>				
EBITDA margin	24.6	25.2	25.3	25.3
Pre-tax margin	18.5	19.7	19.8	19.9
Net margin	14.3	15.3	15.4	15.5
ROA	10.1	11.8	12.3	12.7
ROE	15.5	17.5	17.8	18.1
<b>Growth</b>				
Turnover	9.7	10.2	5.5	5.3
EBITDA	8.0	13.2	5.6	5.4
Pre-tax profit	13.2	17.2	6.0	5.7
Net profit	14.0	18.6	6.1	5.8
Net profit (adj.)	14.0	18.6	6.1	5.8
EPS	14.0	18.6	6.1	5.8
<b>Leverage</b>				
Debt to total capital	15.5	12.5	9.8	7.3
Debt to equity	19.0	14.8	11.4	8.2
Net debt/(cash) to equity	9.1	7.4	6.8	6.0
Interest cover (x)	45.3	102.3	150.2	276.5

## Disclosures/Disclaimers

This report is prepared by UOB Kay Hian Securities (Thailand) Public Company Limited (“UOBKHST”), which is a licensed corporation providing Securities Brokerage, Securities Dealing, Underwriting, Derivative Agent and Financial Advisory in Thailand.

This report is provided for information only and is not an offer or a solicitation to deal in securities or to enter into any legal relations, nor an advice or a recommendation with respect to such securities.

**This report is prepared for general circulation.** It does not have regard to the specific investment objectives, financial situation and the particular needs of any recipient hereof. Advice should be sought from a financial adviser regarding the suitability of the investment product, taking into account the specific investment objectives, financial situation or particular needs of any person in receipt of the recommendation, before the person makes a commitment to purchase the investment product.

This report is confidential. This report may not be published, circulated, reproduced or distributed in whole or in part by any recipient of this report to any other person without the prior written consent of UOBKHST. This report is not directed to or intended for distribution to or use by any person or any entity who is a citizen or resident of or located in any locality, state, country or any other jurisdiction as UOBKHST may determine in its absolute discretion, where the distribution, publication, availability or use of this report would be contrary to applicable law or would subject UOBKHST and its connected persons (as defined in Notification of the Capital Market Supervisory Board No. TorChor. 21/2551 and the Securities and Exchange Act of Thailand) to any registration, licensing or other requirements within such jurisdiction.

The information or views in the report (“Information”) has been obtained or derived from sources believed by UOBKHST to be reliable. However, UOBKHST makes no representation as to the accuracy or completeness of such sources or the Information and UOBKHST accepts no liability whatsoever for any loss or damage arising from the use of or reliance on the Information. UOBKHST and its associate may have issued other reports expressing views different from the Information and all views expressed in all reports of UOBKHST and its connected persons are subject to change without notice. UOBKHST reserves the right to act upon or use the Information at any time, including before its publication herein.

Except as otherwise indicated below, (1) UOBKHST, its associates and its officers, employees and representatives may, to the extent permitted by law, transact with, perform or provide broking, underwriting, corporate finance-related or other services for or solicit business from, the subject corporation(s) referred to in this report; (2) UOBKHST, its associate and its officers, employees and representatives may also, to the extent permitted by law, transact with, perform or provide broking or other services for or solicit business from, other persons in respect of dealings in the securities referred to in this report or other investments related thereto; (3) the officers, employees and representatives of UOBKHST may also serve on the board of directors or in trustee positions with the subject corporation(s) referred to in this report. (All of the foregoing is hereafter referred to as the “Subject Business”); and (4) UOBKHST may otherwise have an interest (including a proprietary interest) in the subject corporation(s) referred to in this report.

As of the date of this report, no analyst responsible for any of the content in this report has any proprietary position or material interest in the securities of the corporation(s) which are referred to in the content they respectively author or are otherwise responsible for.

**IMPORTANT DISCLOSURES FOR U.S. PERSONS**

This research report is prepared by UOBKHST, a company authorized, as noted above, to engage in securities and derivative activities in Thailand. UOBKHST is not a registered broker-dealer in the United States and, therefore, is not subject to U.S. rules regarding the preparation of research reports and the independence of research analysts. This research report is provided for distribution by UOBKHST (whether directly or through its US registered broker dealer affiliate named below) to “major U.S. institutional investors” in reliance on the exemption from registration provided by Rule 15a-6 of the U.S. Securities Exchange Act of 1934, as amended (the “Exchange Act”). All US persons that receive this document by way of distribution from or which they regard as being from UOBKHST by their acceptance thereof represent and agree that they are a major institutional investor and understand the risks involved in executing transactions in securities.

Any U.S. recipient of this research report wishing to effect any transaction to buy or sell securities or related financial instruments based on the information provided in this research report should do so only through UOB Kay Hian (U.S.) Inc (“UOBKHUS”), a registered broker-dealer in the United States. Under no circumstances should any recipient of this research report effect any transaction to buy or sell securities or related financial instruments through UOBKHST.

UOBKHUS accepts responsibility for the contents of this research report, subject to the terms set out below, to the extent that it is delivered to and intended to be received by a U.S. person other than a major U.S. institutional investor.

The analyst whose name appears in this research report is not registered or qualified as a research analyst with the Financial Industry Regulatory Authority (“FINRA”) and may not be an associated person of UOBKHUS and, therefore, may not be subject to applicable restrictions under FINRA Rules on communications with a subject company, public appearances and trading securities held by a research analyst account.

**Analyst Certification/Regulation AC**

Each research analyst of UOBKHST who produced this report hereby certifies that (1) the views expressed in this report accurately reflect his/her personal views about all of the subject corporation(s) and securities in this report; (2) the report was produced independently by him/her; (3) he/she does not carry out, whether for himself/herself or on behalf of UOBKHST or any other person, any of the Subject Business involving any of the subject corporation(s) or securities referred to in this report; and (4) he/she has not received and will not receive any compensation that is directly or indirectly related or linked to the recommendations or views expressed in this report or to any sales, trading, dealing or corporate finance advisory services or transaction in respect of the securities in this report. However, the compensation received by each such research analyst is based upon various factors, including UOBKHST's total revenues, a portion of which are generated from UOBKHST's business of dealing in securities.

Reports are distributed in the respective countries by the respective entities and are subject to the additional restrictions listed in the following table.

General	This report is not intended for distribution, publication to or use by any person or entity who is a citizen or resident of or located in any country or jurisdiction where the distribution, publication or use of this report would be contrary to applicable law or regulation.
Hong Kong	This report is distributed in Hong Kong by UOB Kay Hian (Hong Kong) Limited ("UOBKHHK"), which is regulated by the Securities and Futures Commission of Hong Kong. Neither the analyst(s) preparing this report nor his associate, has trading and financial interest and relevant relationship specified under Para. 16.4 of Code of Conduct in the listed corporation covered in this report. UOBKHHK does not have financial interests and business relationship specified under Para. 16.5 of Code of Conduct with the listed corporation covered in this report. Where the report is distributed in Hong Kong and contains research analyses or reports from a foreign research house, please note: (i) recipients of the analyses or reports are to contact UOBKHHK (and not the relevant foreign research house) in Hong Kong in respect of any matters arising from, or in connection with, the analysis or report; and (ii) to the extent that the analyses or reports are delivered to and intended to be received by any person in Hong Kong who is not a professional investor, or institutional investor, UOBKHHK accepts legal responsibility for the contents of the analyses or reports only to the extent required by law.
Indonesia	This report is distributed in Indonesia by PT UOB Kay Hian Sekuritas, which is regulated by Financial Services Authority of Indonesia. Where the report is distributed in Indonesia and contains research analyses or reports from a foreign research house, please note recipients of the analyses or reports are to contact PT UOBKH (and not the relevant foreign research house) in Indonesia in respect of any matters arising from, or in connection with, the analysis or report.
Malaysia	Where the report is distributed in Malaysia and contains research analyses or reports from a foreign research house, the recipients of the analyses or reports are to contact UOBKHM (and not the relevant foreign research house) in Malaysia, at +603-21471988, in respect of any matters arising from, or in connection with, the analysis or report as UOBKHM is the registered person under CMSA to distribute any research analyses in Malaysia.
Singapore	This report is distributed in Singapore by UOB Kay Hian Private Limited ("UOBKH"), which is a holder of a capital markets services licence and an exempt financial adviser regulated by the Monetary Authority of Singapore. Where the report is distributed in Singapore and contains research analyses or reports from a foreign research house, please note: (i) recipients of the analyses or reports are to contact UOBKH (and not the relevant foreign research house) in Singapore in respect of any matters arising from, or in connection with, the analysis or report; and (ii) to the extent that the analyses or reports are delivered to and intended to be received by any person in Singapore who is not an accredited investor, expert investor or institutional investor, UOBKH accepts legal responsibility for the contents of the analyses or reports only to the extent required by law.
Thailand	This report is distributed in Thailand by UOB Kay Hian Securities (Thailand) Public Company Limited, which is regulated by the Securities and Exchange Commission of Thailand.
United Kingdom	This report is being distributed in the UK by UOB Kay Hian (U.K.) Limited, which is an authorised person in the meaning of the Financial Services and Markets Act and is regulated by The Financial Conduct Authority. Research distributed in the UK is intended only for institutional clients.
United States of America ('U.S.')	This report cannot be distributed into the U.S. or to any U.S. person or entity except in compliance with applicable U.S. laws and regulations. It is being distributed in the U.S. by UOB Kay Hian (US) Inc, which accepts responsibility for its contents. Any U.S. person or entity receiving this report and wishing to effect transactions in any securities referred to in the report should contact UOB Kay Hian (US) Inc. directly.

Copyright 2024, UOB Kay Hian Securities (Thailand) Public Company Limited. All rights reserved.

<http://www.utrade.co.th>